



# Installing DocAve 6 with Windows Clustering

## User Guide

Issued May 2015

# Table of Contents

Installing DocAve with Windows Clustering ..... 3

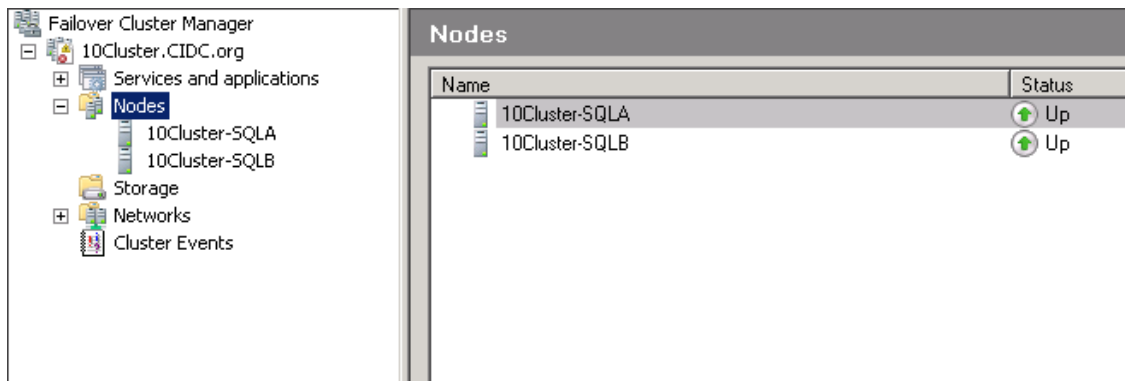
Notices and Copyright Information ..... 8

# Installing DocAve with Windows Clustering

DocAve can be installed and configured to leverage Windows Clustering. Using Windows Clustering, you can continue DocAve service with a minimum amount of down-time if system components fail. This is also known as high availability.

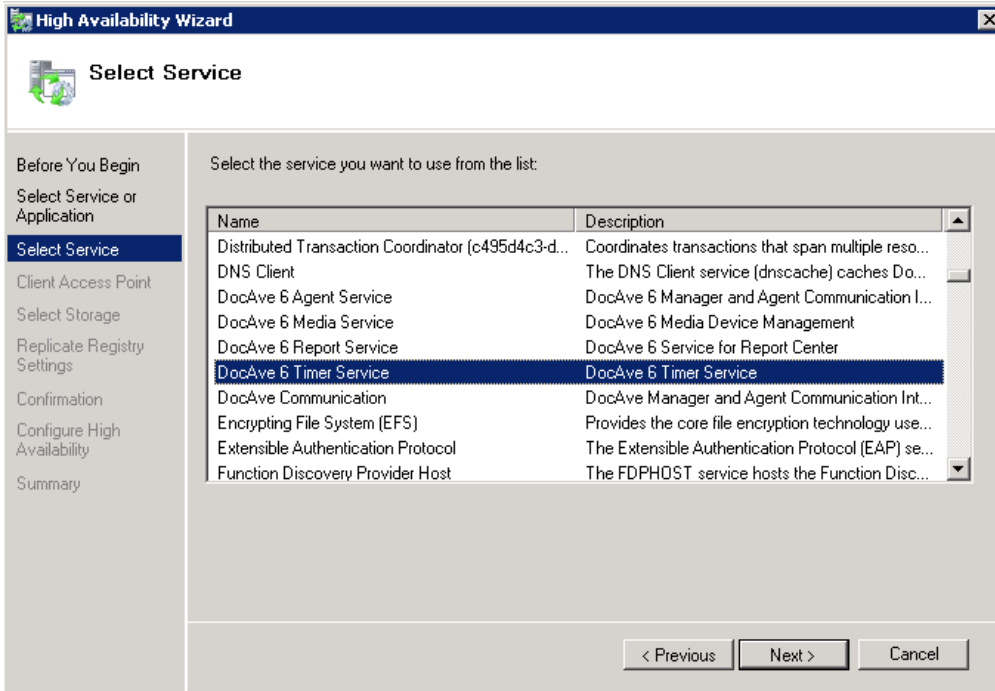
To configure DocAve for high availability, follow the steps below:

1. Select and configure a Windows Cluster, which contains at least two nodes. In this case, we use a simple Failover Cluster consisting of two nodes: node 1 is the **10Cluster-SQLA** node, and node 2 is the **10Cluster-SQLB** node as shown below.



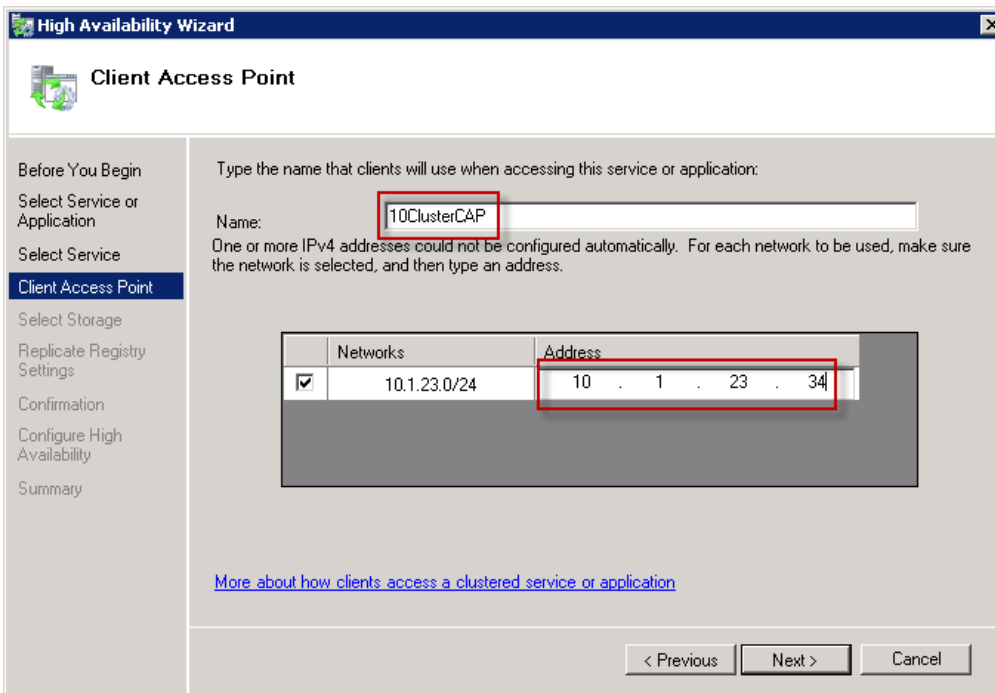
**Figure 1: The simple Failover Cluster.**

2. Log into node 1, and install the DocAve Manager. When configuring the Control Service Host during installation, specify node 1's hostname or IP address. For more information on installing DocAve Manager, refer to the Installation Guide for your version of DocAve at: <http://www.avepoint.com/resources/user-guides/>.
3. After installing DocAve Manager on node 1, log into node 2, and install the DocAve Manager.
  - During the installation, specify node 2 hostname or IP address when configuring the Control Service Host.
  - Use the same Control database, Report database, and Auditor database as the databases used when installing DocAve Manager on node 1.
4. After the installation, navigate to node 1 and start the **Failover Cluster Manager**.
5. Right-click **Services and applications**, and select **Configure a Service or Application** from the drop-down menu.
6. In the **High Availability Wizard**, select the **Generic Service**, and then click **Next**.
7. Select **DocAve Timer Service**, and then click **Next**.



**Figure 2: Select the DocAve Timer Service.**

8. Enter the name that clients will use when accessing this service.
9. Configure the IP address, and then click **Next**.



**Figure 3: Enter the name and configure the IP Address.**

10. Complete the High Availability Wizard by keeping the remaining default options.

11. Access the **Failover Cluster Manager**, right-click the **DocAve Time Service**, and select **Add a resource > 4 - Generic Service**.

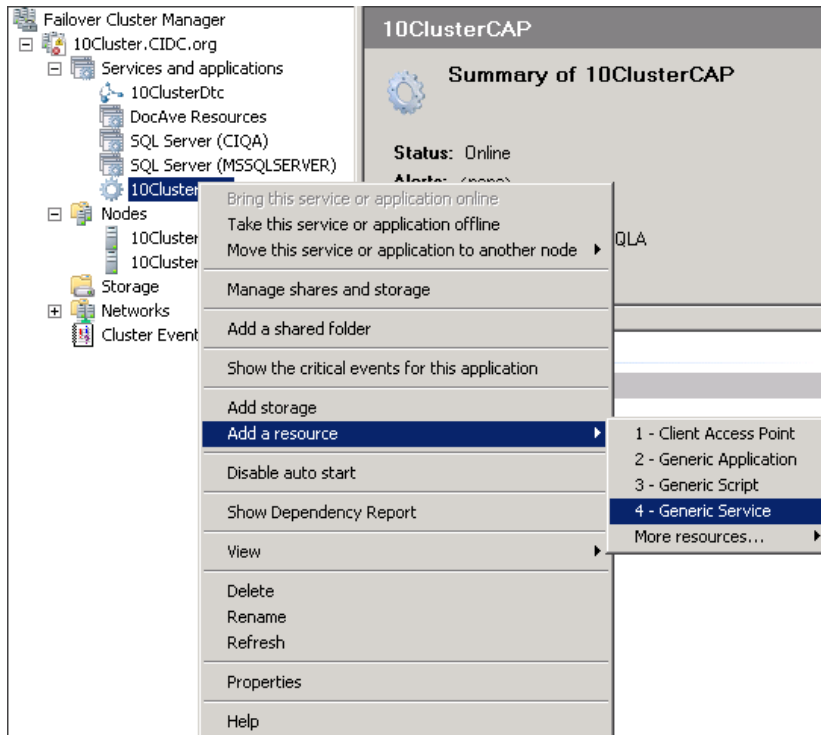


Figure 4: Add a generic service.

12. Select **DocAve Media Service**, and then click **Next**.

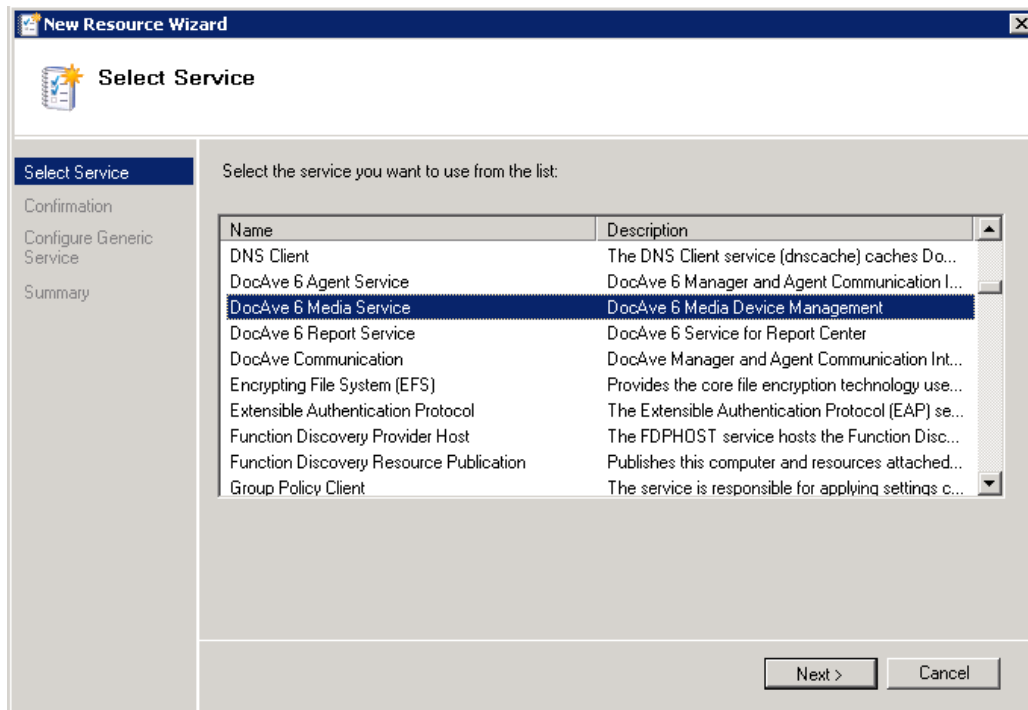


Figure 5: Select the DocAve 6 Media Service.

13. Complete the New Resource Wizard by keeping the remaining default settings, and finish adding the service.
14. Repeat steps 11 through 13 to add the DocAve 6 Report Service.
15. If the DocAve 6 Media or Report Service is **Offline**, right-click it and click **Bring this resource online**.

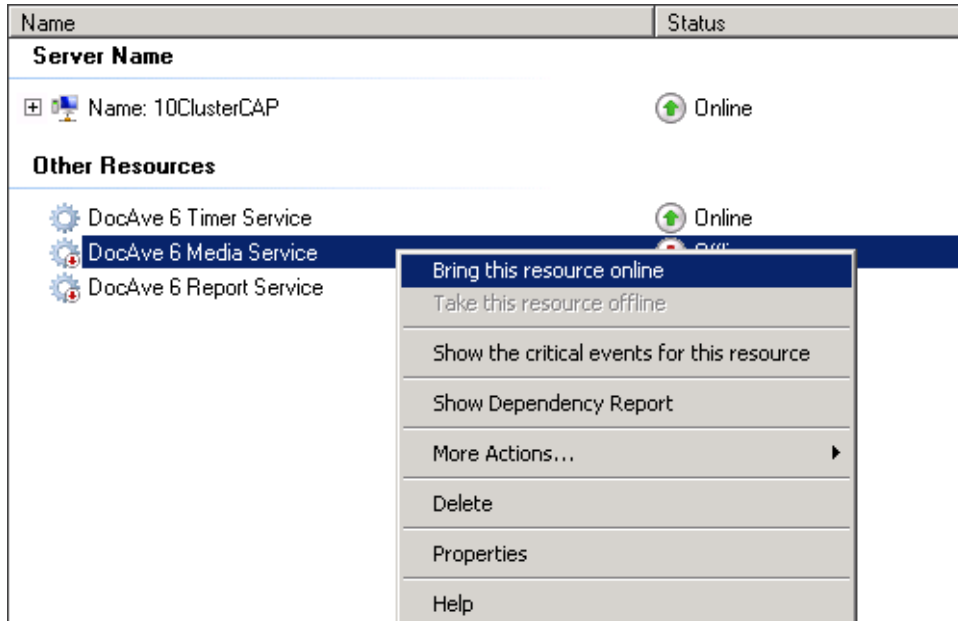


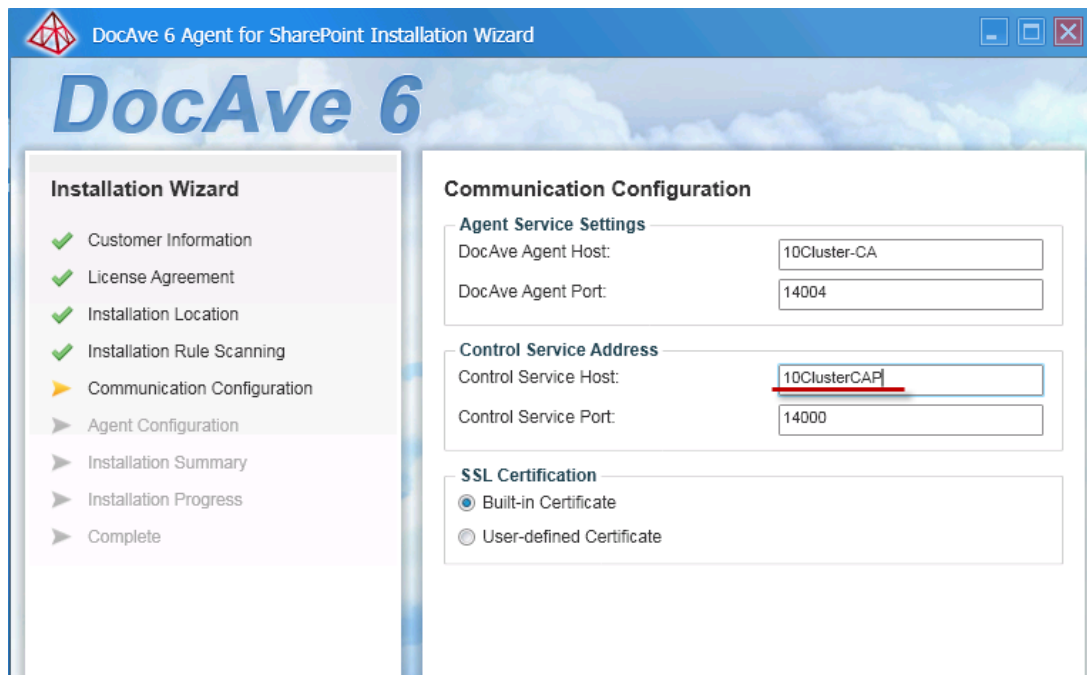
Figure 6: Bring the resource online.

16. Modify the following configuration files on all nodes in the Manager Service.
  - **web.Config**
    1. Navigate to the ...*\AvePoint\DocAve6\Manager\Control* directory to find the **web.Config** file. Open the file.
    2. Modify the value of the **ControlServiceAddress** attribute within the **web.Config** file to the Client Access Point name you specified in step 8 above.
  - **ControlTimeService.exe.config**
    1. Navigate to the ...*\AvePoint\DocAve6\Manager\Control\bin* directory to find the **ControlTimeService.exe.config** file. Open the file.
    2. Modify the value in the **<ControlServiceAddress>** node to the Client Access Point name you specified in step 8 above.
  - **MedialocPropertiesConfigurations.config**
    1. Navigate to the ...*\AvePoint\DocAve6\Manager\Media\bin* directory to find the **MedialocPropertiesConfigurations.config** file. Open the file.
    2. Modify the values in the **<mediaServerName>** node, the **<meidaServerHostorIpAddress>** node, and the **<controlServerAddress>** node to the Client Access Point name you specified step 8 above.

- **ReportCenterServiceProperties.config**

1. Navigate to the ...\*AvePoint\DocAve6\Manager\Report\bin* directory to find the **ReportCenterServiceProperties.config**. Open the file.
  2. Modify the values in the **<reportServerName>** node, the **<reportServerHostorIpAddress>** node, and the **<controlServerAddress>** node to the Client Access Point name you specified in step 8 above.
17. After modifying all the files listed above, restart the DocAve 6 Timer Service, DocAve 6 Media Service, and DocAve 6 Report Service.
  18. Browse to the **Service** table in the Control database, and delete the items with **Host** values that are not the Client Access Point name.
  19. Navigate to **DocAve > Control Panel > Storage Configuration > Create > Storage Policy**.
  20. Select the DocAve Media service with the Client Access Point name.
  21. When setting up the Job Report Location, enter a UNC path that all DocAve Control services can access.

Install DocAve Agents onto the cluster. During the installation, use the Client Access Point name as the Control service host. For more information about installing DocAve Agents, refer to the Installation Guide for your version of DocAve at: <http://www.avepoint.com/resources/user-guides/>.



**Figure 7: Install DocAve Agent.**

**\*Note:** When modifying the configuration files of DocAve, ensure you make same modifications on all Windows Cluster nodes.

# Notices and Copyright Information

## Notice

The materials contained in this publication are owned or provided by AvePoint, Inc. and are the property of AvePoint or its licensors, and are protected by copyright, trademark and other intellectual property laws. No trademark or copyright notice in this publication may be removed or altered in any way.

## Copyright

Copyright © 2012-2015 AvePoint, Inc. All rights reserved. All materials contained in this publication are protected by United States and international copyright laws and no part of this publication may be reproduced, modified, displayed, stored in a retrieval system, or transmitted in any form or by any means, electronic, mechanical, photocopying, recording or otherwise, without the prior written consent of AvePoint, 3 Second Street, Jersey City, NJ 07311, USA or, in the case of materials in this publication owned by third parties, without such third party's consent. Notwithstanding the foregoing, to the extent any AvePoint material in this publication is reproduced or modified in any way (including derivative works and transformative works), by you or on your behalf, then such reproduced or modified materials shall be automatically assigned to AvePoint without any further act and you agree on behalf of yourself and your successors, assigns, heirs, beneficiaries, and executors, to promptly do all things and sign all documents to confirm the transfer of such reproduced or modified materials to AvePoint.

## Trademarks

AvePoint<sup>®</sup>, DocAve<sup>®</sup>, the AvePoint logo, and the AvePoint Pyramid logo are registered trademarks of AvePoint, Inc. with the United States Patent and Trademark Office. These registered trademarks, along with all other trademarks of AvePoint used in this publication are the exclusive property of AvePoint and may not be used without prior written consent.

Microsoft, MS-DOS, Internet Explorer, Office, Office 365, SharePoint, Windows PowerShell, SQL Server, Outlook, Windows Server, Active Directory, and Dynamics CRM 2013 are either registered trademarks or trademarks of Microsoft Corporation in the United States and/or other countries.

Adobe Acrobat and Acrobat Reader are trademarks of Adobe Systems, Inc.

All other trademarks contained in this publication are the property of their respective owners and may not be used without such party's consent.

## Changes

The material in this publication is for information purposes only and is subject to change without notice. While reasonable efforts have been made in the preparation of this publication to ensure its accuracy, AvePoint makes no representation or warranty, expressed or implied, as to its completeness, accuracy, or suitability, and assumes no liability resulting from errors or omissions in this publication or from the use of the information contained herein. AvePoint reserves the right to make changes in the Graphical User Interface of the AvePoint software without reservation and without notification to its users.

AvePoint, Inc.  
Harborside Financial Center, Plaza 10  
3 Second Street, 9th Floor  
Jersey City, New Jersey 07311  
USA